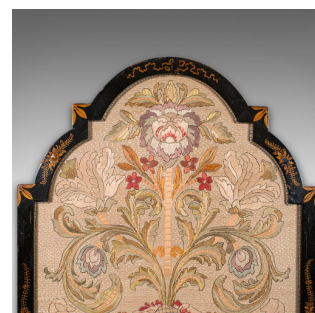


## Antique Embroidered Panel, English, Framed Silkwork, Baroque Taste, Victorian



### DESCRIPTION

Our Stock # 25495

This is an antique embroidered panel. An English, framed silkwork after Margarethe Helm, dating to the late Victorian period, circa 1890.

<li class="p1">Delightful example of Baroque needlework, inspired by Margarethe Helm's pattern book of 1725

<li class="p1">Presented behind glass within a tasteful ebonised frame, adorned with gilt flower detail

<li class="p1">Executed in fine satin and couched stitching, set against a brick stitched background for texture

<li class="p1">Decorative foliate scene with expressive tones and period charm

<li class="p1">Well-suited for hallways, reception rooms, or country house interiors

<li class="p1">A fine showcase of late 19th century needlework, reviving 18th century taste

<li class="p1">Dressed to the rear with mounting wire for ease of wall hanging

<li class="p1">Offers a refined and elegant focal point with decorative and historical appeal

### DIMENSIONS

Max Width: 46cm (18")

Max Depth: 3cm (1.25")

Max Height: 62.5cm (24.5")

Panel Width: 40.5cm (16")

Panel Height: 57.5cm (22.75")

### LIST PRICE

£1,295.00



A beautifully framed Victorian silkwork panel, this piece brings together artistic and historical revival styling, ideal for the discerning interior designer. Delivered ready for the home.

Search [London Fine for #25495](#) , or scan the QR code for more photos and details

The Antique Village  
 The Old Whiteways Cider Factory  
 Hele, Devon, EX5 4PW

[sales@londonfine.co.uk](mailto:sales@londonfine.co.uk)

E. & O. E.