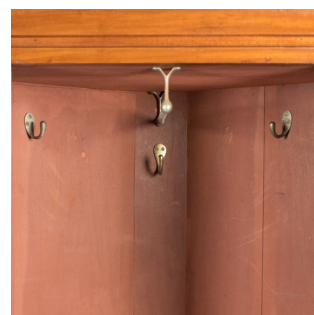


Victorian Antique Corner Wardrobe, Mahogany, English c.1880



DESCRIPTION

Our Stock # LFA-1716

This is an Victorian antique corner wardrobe in mahogany. An English cabinet dating to c.1880.

- Quality craftsmanship in mahogany displaying honey tones
- Good, consistent colour and grain interest in the wax polished finish
- Upper frieze moulding beneath cavetto crown moulding
- Raised on a continuous plinth base
- Left-hand hinged door dressed with bronze twist lock, key absent
- Original bevelled mirror plate in good order
- Fluted stiles between stop ended, rounded corners that soften the look
- The fitted interior has a lower shelf with boot space beneath
- The upper compartment features a hanging rail and hooks
- To the back of the door is a scarf, tie or belt hanger

Search [London Fine](#) for #LFA-1716 or scan the QR code for more photos and details

DIMENSIONS

Max Width: 87cm (34.25")

Max Depth: 55cm (21.75")

Max Height: 206cm (81")

