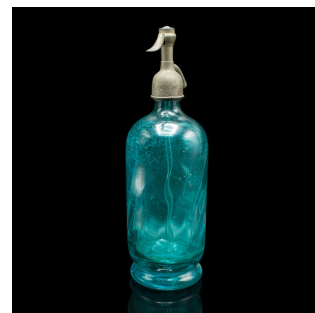


Pair of Soda Syphons, French, Glass, Seltzer Bottle, Early 20th Century, Barware



DESCRIPTION

Our Stock # 25477

This is a pair of aged soda syphons in striking French blue glass, dating to the early 20th century.

These charming seltzer bottles display beautifully, with their vibrant glass hues, etched branding, and period charm. Substantial in weight and craftsmanship, each bottle features a steel lid with integrated pouring spout, engraved with the dates 1913 and 1932 respectively. The etched labels denote the original seltzer manufacturers, adding authenticity and decorative appeal. Perfect as vintage kitchenware, home bar display pieces, or collectable French glassware.

<li class="p1">Duo of antique and vintage soda syphons, ideal as decorative display bottles

<li class="p1">Crafted in vibrant French blue glass with wonderful luminance

<li class="p1">Steel lids with integrated pouring spouts, engraved with dates 1913 & 1932

<li class="p1">

Bottles etched with Constant & Fils and Prosper Sirop respectively

<li class="p1">Substantial weight of 1.62kg each, offering a quality feel

<li class="p1">Rich patina and gentle wear consistent with use

<li class="p1">Ideal for vintage kitchen décor, home bars, or g

<li class="p1">Two fine examples of e ...

DIMENSIONS

Max Width: 9cm (3.5")

Max Depth: 9cm (3.5")

Max Height: 30cm (11.75")

LIST PRICE

£395.00

