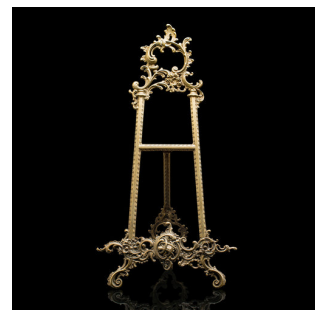


## Tall Vintage Picture Easel, English, Gilt Metal, Rococo Revival, Artwork Stand



## DESCRIPTION

Our Stock # 25623

This is a tall vintage picture easel, crafted in England during the Art Deco period, circa 1930. This ornate Rococo revival display stand is fashioned from gilt metal with rich golden tones, offering a stylish way to showcase artwork, mirrors, or photographs. Designed in a robust A-frame form with a stable tripod base, this decorative easel exudes timeless elegance and period charm.

- <li class="p1">Elegant English picture easel with Rococo revival influence
- 

- <li class="p1">Compact yet commanding, perfect for tabletop or floor display
- 

This vintage gilt picture easel is a decorative and functional accent piece, ideal for adding a touch of historic elegance to your gallery, home, or retail display. Delivered ready ...

+44 (0) 207 1833 511  
Search [London Fine](#) for #25623

, or scan the QR code for more photos and details

London Fine Ltd  
The Antique Village  
The Old Whiteways Cider Factory  
Hele, Devon, EX5 4PW

## DIMENSIONS

Max Width: 27cm (10.75")

Max Depth: 24cm (9.5")

Max Height: 53.5cm (21")

## LIST PRICE

£395.00



[sales@londonfine.co.uk](mailto:sales@londonfine.co.uk)

E. & O. E.