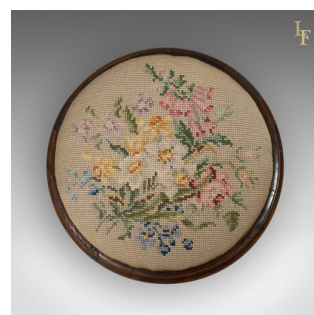


Pair of Antique Foot Stools, English, Victorian, Needlepoint, Carriage, c.1860



DESCRIPTION

Our Stock # LFA-1531

This is a pair of antique foot stools, English, Victorian, needlepoint, carriage foot rests dating to c.1860.

- Attractive colour to the dark walnut frames
- Serpentine aprons subtly decorated with etched foliate carving
- Raised on squat cabriole legs with scrolled toes
- Attractive floral sprays to the needlepoint tapestry covers
- Traditionally stuffed and secured beneath with a wooden thumb nut

A quality pair of foot rests solidly jointed. Delivered waxed, polished and ready for the home.

Search [London Fine for #LFA-1531](#) or scan the QR code for more photos and details

DIMENSIONS

Max Width: 30.5cm (12")

Max Depth: 30.5cm (12")

Max Height: 16.5cm (6.5")

