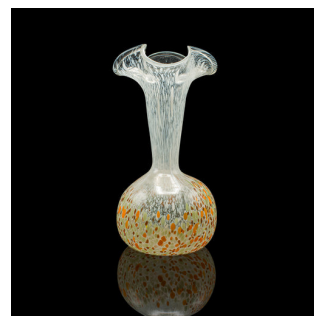
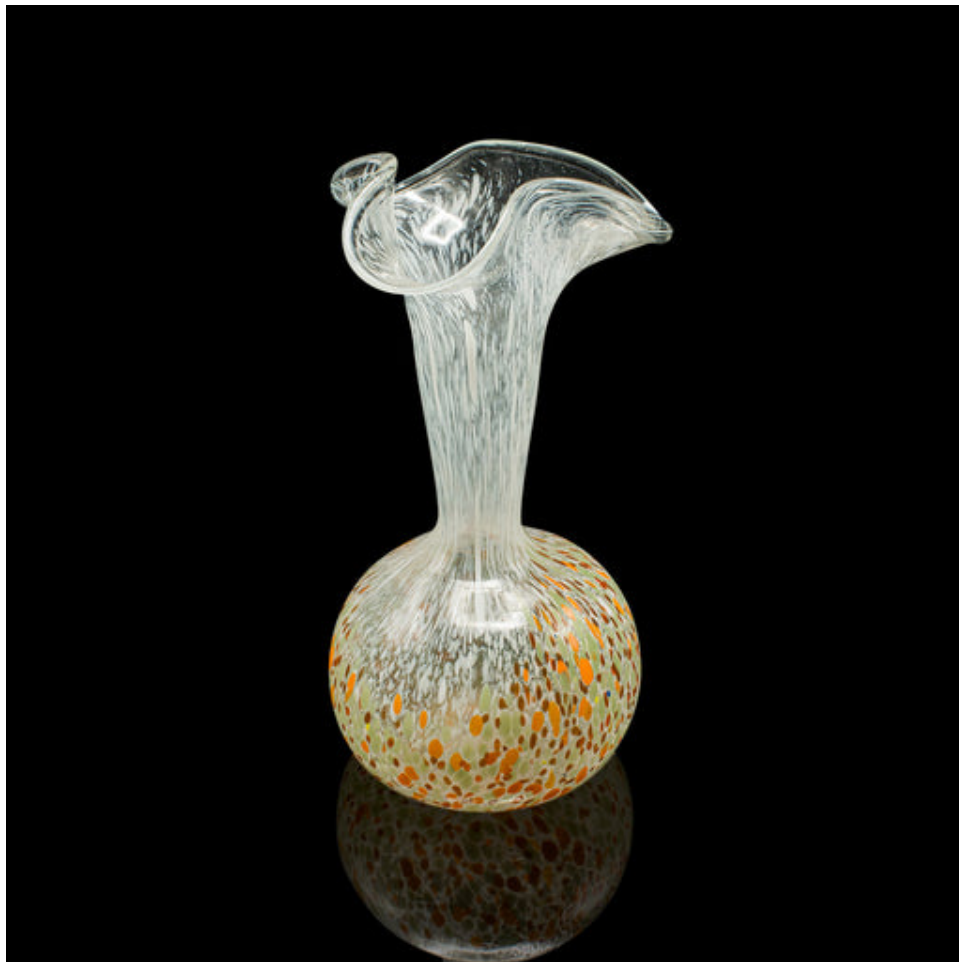


## Vintage Display Vase, Continental, Art Glass, Posy Sleeve, Mid Century Modern



## DESCRIPTION

Our Stock # 25569

This is a vintage display vase with expressive blown glass artistry, dating to the late 20th century, circa 1970. This Continental posy sleeve showcases a striking mid-century inspired colour palette and a bold decorative presence, making it a charming addition to any collection or interior.

<li class="p1">Attractive Continental art glass vase, dating to the late 20th century, circa 1970

<li class="p1">Distinctive blown glass form with fluid, organic contours

<li class="p1">Striking green, orange, and brown colour palette, evocative of mid-century style

<li class="p1">Period decorative style, influenced by Murano and Bohemian glass design

<li class="p1">Compact posy sleeve format, perfect for a single bloom or display as a standalone piece

<li class="p1">Ideal for art glass collectors or as a statement accent within a modern or retro-inspired setting

This vintage Continental glass vase presents a vivid decorative statement, offering a collectible and stylish accent for the display cabinet, mantel, or tabletop.

## DIMENSIONS

Max Width: 9cm (3.5")

Max Depth: 8.5cm (3.25")

Max Height: 16.5cm (6.5")

## LIST PRICE

£295.00



Search London Fine for #25569 , or scan the QR code for more photos and details.  
+44 (0) 207 1855 511

London Fine Ltd  
The Antique Village  
The Old Whiteways Cider Factory  
Hele, Devon, EX5 4PW

sales@londonfine.co.uk  
E. & O. E.