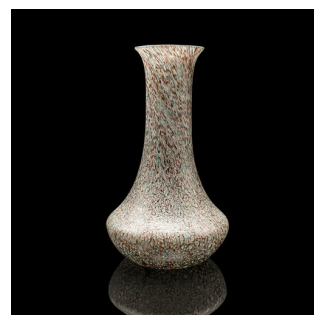
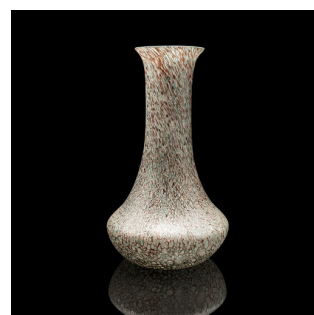
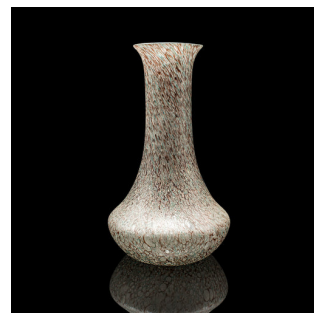


## Vintage Flower Vase, Scottish, Art Glass, Display, Tear Drop Posy Sleeve, C.1980



### DESCRIPTION

Our Stock # 25213

This is a vintage flower vase, originating from Scotland and dating to the late 20th century, circa 1980. This elegant art glass display sleeve captivates with its mottled finish, flowing twist pattern, and distinctive tear drop form. A refined decorative piece, perfect for single stems or small posies.

<li class="p1">Attractive Scottish flower vase in the manner of Caithness glass

<li class="p1">Distinctive tear drop profile with smooth, elegant taper

<li class="p1">Mottled decoration enriched with a cascading twist pattern around the body

<li class="p1">Natural earthy colour palette evokes warmth and organic appeal

<li class="p1">Compact posy sleeve, ideal for floral display or as a stand-alone ornament

<li class="p1">Presented in good original order, free of cracks, chips, or loss

<li class="p1">A fine choice for collectors of Scottish art glass or enthusiasts of 20th century design

This vintage Scottish vase presents a refined balance of colour, texture, and form, offering a stylish addition to both modern and traditional interiors. Delivered ready to display.

+44 (0) 207 1833 511

Search [London Fine](#) for #25213 , or scan the QR code for more photos and details

### DIMENSIONS

Max Width: 10.5cm (4.25")

Max Depth: 10.5cm (4.25")

Max Height: 20cm (7.75")

### LIST PRICE

£235.00

