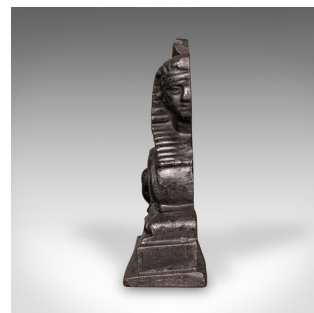
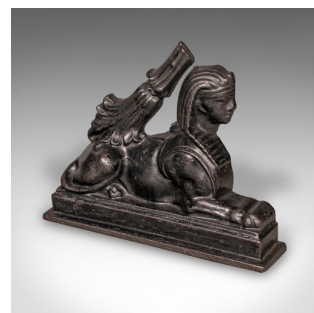
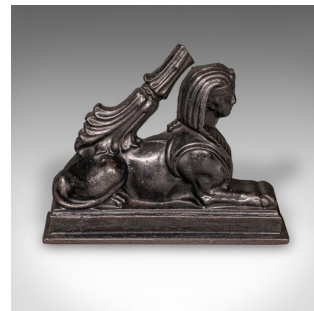


Antique Egyptian Revival Doorstop, English Cast Iron Sphinx, Regency, Circa 1830



DESCRIPTION

Our Stock # 25622

This is an antique Egyptian revival doorstop. An English, cast iron door keeper in Sphinx form, dating to the late Regency period, circa 1830. A wonderfully evocative piece of early 19th century interior decor, celebrating Britain's fascination with Egyptian revival design.

- <li class="p1">Delightful Regency period doorstop from the early 19th century
- <li class="p1">Cast as half of the famous Sphinx, symbolising strength and mystery
- <li class="p1">Finished with a consistent graphite tone throughout
- <li class="p1">Decorative arched handle for ease of movement

<li class="p1">Pattern number to the reverse, akin to Archibald Kenrick & Sons' revivalist work

<li class="p1">Excellent weight at 3.838kg, perfectly suited for everyday use

<li class="p1">Unmarked, yet comparable in form to known Kenrick Egyptian revival examples

This antique Sphinx doorstop offers both practical function and decorative appeal, a fine statement piece for collectors of Egyptian revival and Regency period furnishings.

Delivered ready for the home.

+44 (0) 207 1833 511

Search [London Fine](#) for #25622 , or scan the QR code for more photos and details

DIMENSIONS

Max Width: 22cm (8.75")

Max Depth: 5.5cm (2.25")

Max Height: 17cm (6.75")

LIST PRICE

£485.00



sales@londonfine.co.uk

E. & O. E.

London Fine Ltd
 The Antique Village
 The Old Whiteways Cider Factory
 Hele, Devon, EX5 4PW