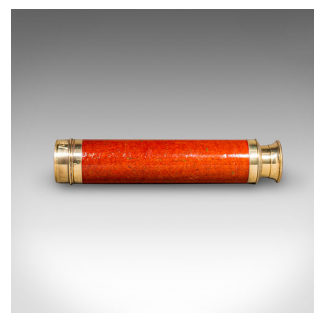
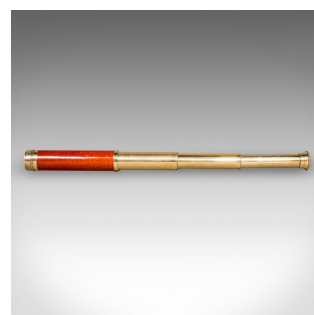


## Small Antique 3 Draw Telescope, English Brass, Fruitwood, Terrestrial, Victorian



### DESCRIPTION

Our Stock # 25465

This is a small antique three draw telescope, an English brass and fruitwood terrestrial refractor, dating to the late Victorian period, circa 1900. A delightfully tactile optical instrument, with fine brass barrels and a richly toned wooden main tube.

Perfect for bird watching, landscape appreciation, wildlife, or maritime observation. Equally suitable for observing the night sky.

- Charming Victorian period three draw telescope, circa 1900
- Bright brass barrels with rich golden tones, showing gently aged character
- Fruitwood primary barrel with warm caramel hues and fine grain interest
- Removable dust cap protects the 25mm diameter primary objective lens
- Flared eyecup fitted with a sliding dust cover for protection when not in use
  - Smooth draw action provides a useful extended length, ideal for terrestrial observation
- Compact size and appealing form, perfect for a collector's cabinet, desk, or field use
- Supplied with a London Fine oak and brass 'Captain's Stand' for display

### DIMENSIONS

Closed Length: 15cm (6")  
 Fully Drawn: 40cm (15.75")  
 Objective Diameter: 2.5cm (1")

### LIST PRICE

£795.00



Search [London Fine for #25465](#) , or scan the QR code for more photos and details