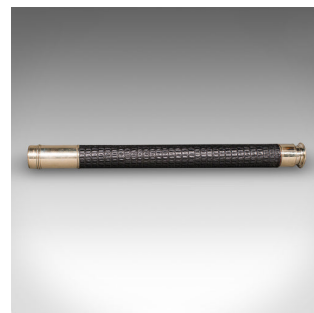
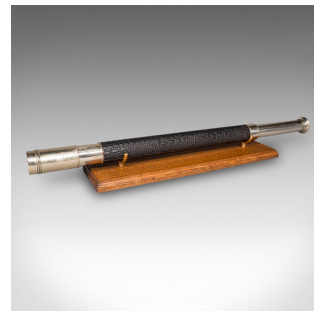


Antique Officer of the Watch Telescope, English, Ross of London, Victorian, 1900



DESCRIPTION

Our Stock # 25468

This is an antique Officer of the Watch telescope. An English, brass single draw terrestrial or marine spyglass by Ross of London, dating to the late Victorian period, circa 1900. A characterful example with a tactile later finish and fine optical presence.

Perfect for bird watching, landscape appreciation, wildlife, or maritime observation. Equally suitable for observing the night sky.

- Superb Victorian Officer of the Watch telescope, circa 1900
- Signed to the draw tube for Ross of London, renowned optical makers
- Polished brass barrels with a light silver tonality, presenting appealing age character
- 30mm diameter primary objective lens, protected from glare with a sliding dust cover

- Later textured cover to the main barrel, offering a distinctive and tactile finish
- Flared eye cup with sliding dust cover for lens protection when not in use
- Smooth draw action and fine proportions, ideal for terrestrial or marine observation
- Supplied with a London Fine oak and brass 'Captain's Stand' for display

Search [London Fine for #25468](#) , or scan the QR code for more photos and details

DIMENSIONS

Closed Length: 44cm (17.25")

Fully Drawn: 62.5cm (24.5")

Objective Diameter: 30mm (1.25")

LIST PRICE

£995.00

