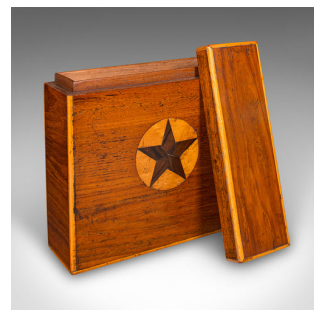


Antique Document Sleeve, English, Stationery Box, Home Office, Georgian, C.1800



DESCRIPTION

Our Stock # 25619

This is an antique document sleeve. An English stationery box in mahogany and satinwood marquetry, dating to the Georgian period, circa 1800. A fine example of late 18th century craftsmanship, notable for its star motif inlay and refined proportions.

<li class="p1">Charming Georgian stationery box, circa 1800

<li class="p1">Select stocks present fine grain interest with warm caramel and biscuit hues

<li class="p1">Shallow lid sits neatly above the sleeved interior, perfect for receipts, letters, or small documents

<li class="p1">Fascia adorned with a bold star medallion, inlaid in contrasting satinwood with brown and saffron tones

<li class="p1">Satinwood inlay provides a delicate lightness, accentuating the rich mahogany casework

<li class="p1">Marquetry design enhances the refined and classical Georgian aesthetic

<li class="p1">In good order with light, sympathetic ageing commensurate with use

DIMENSIONS

Max Width: 23.5cm (9.25")

Max Depth: 7.5cm (3")

Max Height: 22.5cm (8.75")

Internal Width: 20.5cm (8")

Internal Depth: 4.5cm (1.75")

Internal Height: 18.5cm (7.25")

LIST PRICE

£995.00



This Georgian antique document sleeve offers a blend of elegance and utility, ideal for collectors of antique boxes, writing accessories, or decorative marquetry. Solid joints and a shallow lid make it a practical addition to the home.

Search [London Fine for #25619](#) , or scan the QR code for more photos and details

London Fine Ltd
 The Antique Village
 The Old Whiteways Cider Factory
 Hele, Devon, EX5 4PW

sales@londonfine.co.uk

E. & O. E.