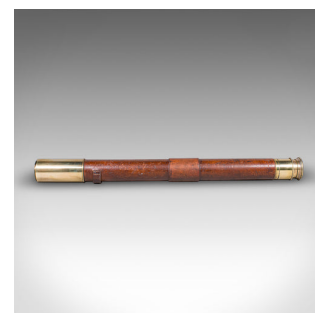
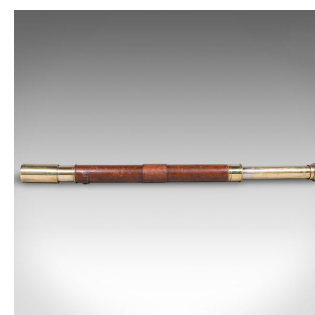
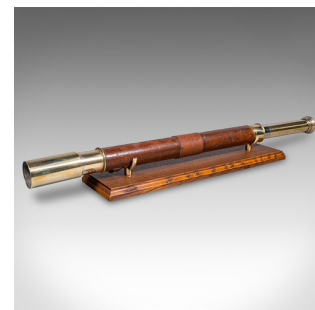




Antique Explorer's Telescope, English, Leather Dressed Spyglass, Edwardian, 1910



DESCRIPTION

Our Stock # 25467

This is a long antique explorer's telescope. An English, terrestrial or maritime spyglass, dating to the Edwardian period, circa 1910. With its classic single draw form, brass fittings, and tactile leather covering, this telescope offers both function and decorative appeal.

Perfect for bird watching, landscape appreciation, wildlife, or maritime observation. Equally suitable for observing the night sky.

<li class="p1">Antique explorer's telescope, English, dating to the Edwardian period, circa 1910

<li class="p1">Single draw spyglass with brass sun shade and flared eye cup

<li class="p1">Primary barrel dressed in lightly patinated brown leather, complete with matching lens cap

<li class="p1">32mm objective lens, providing clear terrestrial or maritime viewing

<li class="p1">Brass fittings present a pleasing golden tonality, gently aged with use

<li class="p1">Good proportion for display or practical handling, showcasing early 20th century craftsmanship

<li class="p1">A fine addition for collectors of nautical instruments, Edwardian travel ephemera, or period study interiors

44 (0) 207 1833 511

Search [London Fine for #25467](#) , or scan the QR code for more photos and details
The Antique Village
The Old Whiteways Cider Factory
Hele, Devon, EX5 4PW

DIMENSIONS

Closed Length: 45.5cm (18")

Fully Drawn: 64cm (25.25")

Objective Diameter: 32mm (1.25")

LIST PRICE

£895.00



sales@londonfine.co.uk

E. & O. E.