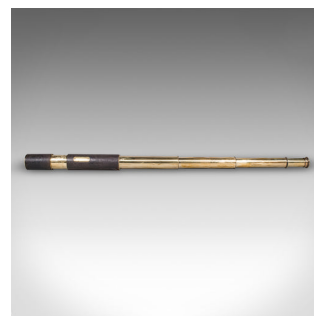


Antique Lord Bury 4 Draw Telescope, English, Terrestrial, JH Steward, Victorian



DESCRIPTION

Our Stock # 25560

This is an antique Lord Bury 4 draw telescope. An English, leather and brass terrestrial or astronomical refractor by J.H. Steward of London, dating to the Victorian period, circa 1880.

Perfect for bird watching, landscape appreciation, wildlife, or maritime observation. Equally suitable for observing the night sky.

- <li class="p1">A captivating and pleasingly tactile Victorian telescope
-

- <li class="p1">Replete with a protective leather end cap for the front element
-

- <li class="p1">Swivel type dust cover to the concentric ring decorated eyecup
-

Search [London Fine for #25560](#) , or scan the QR code for more photos and details

DIMENSIONS

Closed Length: 25.5cm (10")
Fully Drawn: 88cm (34.75")
Objective Diameter: 4cm (1.5")

LIST PRICE

£1,695.00

