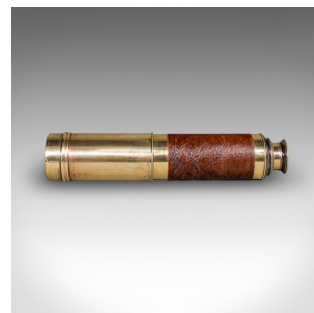
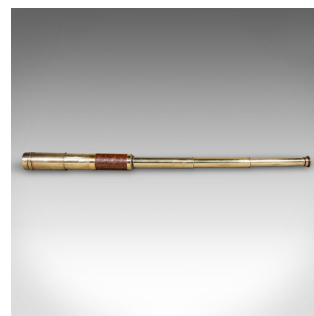
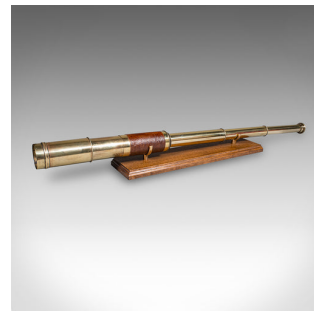


## Large Antique 3 Draw Telescope, English Brass, Leather Spyglass, Victorian, 1860



### DESCRIPTION

Our Stock # 25655

This is a large antique three draw telescope. An English, brass and leather terrestrial or maritime spyglass, dating to the Victorian period, circa 1860. Of excellent proportion and finish, this fine optical instrument presents with both practical appeal and decorative presence.

Perfect for bird watching, landscape appreciation, wildlife, or maritime observation. Equally suitable for observing the night sky.

- Crafted from quality brass, displaying rich golden tones and gentle age patina
- Primary barrel dressed in original brown leather, offering tactile charm
- 37mm diameter objective lens, protected by a long sliding brass sun shade and dust cap
- Eye cup with concentric detail and inset sliding dust cover
- Smooth action draw tubes, extending and collapsing with ease
- A fine example of a Victorian spyglass, equally suited to terrestrial or maritime observation
- Supplied with a London Fine oak and brass 'Captain's Stand' for display

### DIMENSIONS

Closed Length: 24cm (9.5")

Fully Drawn: 80cm (31.5")

Objective Diameter: 3.7cm (1.5")

### LIST PRICE

£895.00



This Victorian brass and leather telescope is a handsome, collectable example, with an elegant finish and functional appeal for both maritime enthusiasts and collectors alike. Delivered ready to use.

Search [London Fine for #25655](#)

[London Fine Ltd](#)  
The Antique Village  
The Old Whiteways Cider Factory  
Hele, Devon, EX5 4PW

[sales@londonfine.co.uk](mailto:sales@londonfine.co.uk)  
E. & O. E.