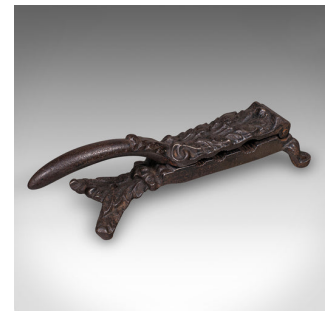
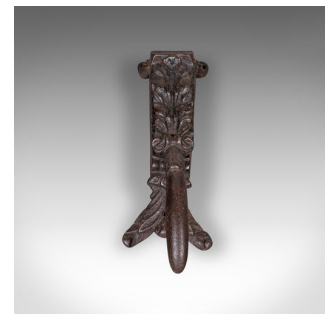


Antique Apothecary Cork Compressor, English, Door Knocker, Victorian, Circa 1850



DESCRIPTION

Our Stock # 25444

This is an antique apothecary cork compressor. An English, cast iron pharmaceutical press dating to the early Victorian period, circa 1850. A fascinating piece of medical and industrial history, equally suited for collectors or creative repurposing.

- Crafted in cast iron with a rich, deep graphite tonality
- Originally designed as a Victorian pharmaceutical press
- Accentuated with oak leaf relief detail to the body
- Mounting holes integrated for counter top or wall placement
- Potential for repurposing as a unique and characterful door knocker
- In good antique order with appealing light age patination
- A distinctive piece of Victorian medical and industrial heritage

This Victorian cork compressor is a wonderful example of apothecary equipment, offering both historic interest and decorative appeal. A superb addition for collectors of medical antiques, industrial curiosities, or unusual architectural accents. Delivered ready for the home or institution.

DIMENSIONS

Max Width: 8cm (3.25")
Max Depth: 27.5cm (10.75")
Max Height: 6.5cm (2.5")

LIST PRICE

£495.00



Search [London Fine](#) for #25444, or scan the QR code for more photos and details

+44 (0) 207 1833 511

London Fine Ltd
The Antique Village
The Old Whiteways Cider Factory
Hele, Devon, EX5 4PW

sales@londonfine.co.uk
E. & O. E.