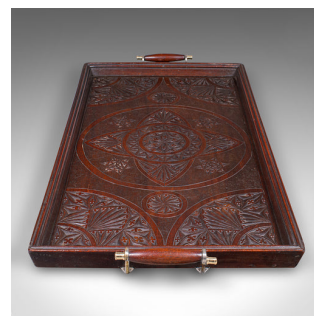


Large Antique Presentation Tray, English, Afternoon Tea, Server, Edwardian, 1910



DESCRIPTION

Our Stock # 25539

This is a large antique presentation tray. An English, mahogany afternoon tea serving platter, dating to the Edwardian period, circa 1910. Of fine proportion and quality craftsmanship, this piece combines practical function with elegant decorative appeal.

- Crafted from select mahogany with rich russet hues and fine grain interest
- Pair of rolled handles sit gracefully above swan neck brackets for ease of service

- Relief carved centre features a foliate motif medallion framed by demi-lune panels

- Nicely proportioned, ideal for afternoon tea or drinks service

- Raised edges ensure stability for glassware and crockery

- Presented in good antique order, showing gentle age commensurate with light use

This Edwardian mahogany presentation tray offers both practicality and period elegance, making it a refined addition to any dining room, drinks cabinet, or afternoon tea service. Delivered ready for the home.

DIMENSIONS

Max Width: 67.5cm (26.5")

Max Depth: 33cm (13")

Max Height: 4.5cm (1.75")

Tray Interior Width: 58cm (22.75")

Tray Interior Depth: 29.5cm (11.5")

LIST PRICE

£795.00



Search [London Fine](#) for #25539, or scan the QR code for more photos and details

+44 (0) 207 1833 511

London Fine Ltd
 The Antique Village
 The Old Whiteways Cider Factory
 Hele, Devon, EX5 4PW

sales@londonfine.co.uk
 E. & O. E.