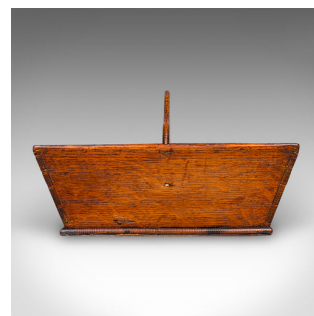


Antique Ladies Country Kitchen Work Box, English, Oak, Garden Trug, Victorian



DESCRIPTION

Our Stock # 25616

This is an antique ladies . An English, oak dual division tool carry or garden trug, dating to the early Victorian period, circa 1850. An estate-made example with charming proportion and fine grain detail.

- <li class="p1">Crafted from select oak stocks with superb figuring and medullary rays
-

Dressed with a suede leather protective base for reassuring placement on internal surfaces

This Victorian oak country kitchen work box is a versatile and decorative piece, equally at home in the kitchen, garden, or as a charming household organiser. A wonderful example of estate-made craftsmanship with enduring appeal. Solid joints and construction, delivered ready for the home.

Search [London Fine for #25616](#) , or scan the QR code for more photos and details

DIMENSIONS

Max Width: 36cm (14.25")
Max Depth: 25cm (9.75")
Max Height: 16.5cm (6.5")
Division Depth: 10.5cm (4.25")

LIST PRICE

£795.00

