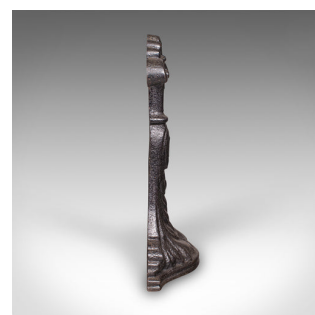
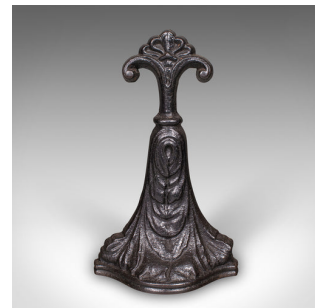


Antique Door Porter, English, Cast Iron, Doorstop, Keeper, Victorian, Circa 1860

**DESCRIPTION**

Our Stock # 25376

This is an antique door porter. An English, cast iron doorstop, dating to the Victorian period, circa 1860. A fine decorative yet functional piece, offering 19th century elegance to any interior.

- Cast iron construction with substantial presence and deep graphite finish
- Delightful period form, exuding Victorian elegance with fleur de lys inspired motif
- Weighs 3.95kg (8.7 lb) - ideal for securing medium-sized doors with ease
- Lightly timeworn patina commensurate with age, enhancing its character
- Perfect for the lounge, hallway, study or bedroom
- A blend of robust utility and decorative 19th century charm

This Victorian cast iron door porter is a superb period accessory, offering both practical use and antique appeal for traditional interiors. Delivered ready for the home.

Search [London Fine for #25376](#) , or scan the QR code for more photos and details

DIMENSIONS

Max Width: 18.5cm (7.25")

Max Depth: 7cm (2.75")

Max Height: 30cm (11.75")

LIST PRICE

£595.00

