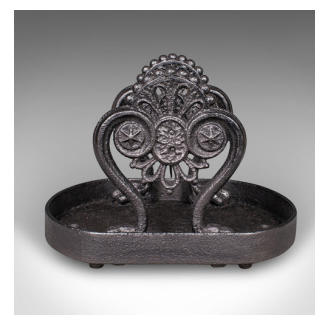


Large Antique Townhouse Boot Scraper, English, Shoe Pull, Georgian, Circa 1750



DESCRIPTION

Our Stock # 25646

This is an antique townhouse boot scraper. An English, cast iron shoe pull, dating to the early Georgian period, circa 1750. A superbly proportioned and weighty entranceway piece, offering both functional charm and striking decorative appeal.

- Larger than the typical example, being ideal for grand entrances
- Quality cast iron with deep graphite tones and excellent form
 - Scrolled supports host the scraper bar between rosette medallions with beaded detail
 - Supports descend gracefully to an oval drip tray, resting upon paw feet motif
- Substantial weight of 16kg (35.274 lb) - ideal for stable and enduring use
- Mounting holes to the base for secure placement at an entranceway
 - Combines practical function with townhouse elegance, perfectly suited for period properties

This Georgian cast iron boot scraper is a fine example of mid 18th century craftsmanship, blending robust utility with refined decorative taste – a statement piece for any entrance hall or garden setting. Delivered ready for the home

DIMENSIONS

Max Width: 26.5cm (10.5")

Max Depth: 41cm (16.25")

Max Height: 30cm (11.75")

Scraper Width: 11cm (4.25")

LIST PRICE

£1,495.00



Search London Fine for #25646 , or scan the QR code for more photos and details.
+44 (0) 207 1855 511

London Fine Ltd
The Antique Village
The Old Whiteways Cider Factory
Hele, Devon, EX5 4PW

sales@londonfine.co.uk
E. & O. E.