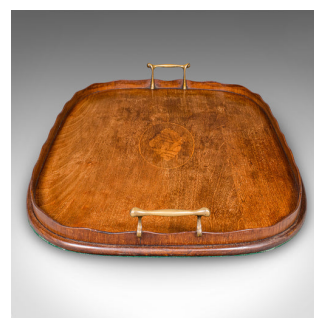


Antique Afternoon Tea Tray, English Walnut, Satinwood Serving Platter, Edwardian



DESCRIPTION

Our Stock # 25647

This is an antique afternoon tea tray. An English, walnut and satinwood serving platter, dating to the Edwardian period, circa 1910. A refined and decorative piece, perfect for elegant tea service or display.

- <li class="p1">Select walnut stocks display superb grain interest and warm caramel hues
- <li class="p1">Sash edge detail lends distinction, fitted with brass carry handles for ease of use
- <li class="p1">Tray centre features a fine satinwood shell inlay, enhancing its decorative charm
- <li class="p1">Dressed to the base with emerald green protective baize for surface preservation
- <li class="p1">Well-proportioned and ideal for refined gatherings, tea rooms, or period interiors

This Edwardian walnut and satinwood tray is a delightful serving piece with superb craftsmanship and timeless character, making it a fine addition to any collection or afternoon tea setting. Delivered ready for the home or institution.

DIMENSIONS

Max Width: 55.5cm (21.75")
 Max Depth: 37.5cm (14.75")
 Max Height: 6cm (2.25")
 Internal Width: 53.5cm (21")
 Internal Depth: 34.5cm (13.5")
 Internal Height: 1.5cm (.5")

LIST PRICE

£495.00



Search [London Fine for #25647](#) , or scan the QR code for more photos and details

+44 (0) 207 1833 511

London Fine Ltd
 The Antique Village
 The Old Whiteways Cider Factory
 Hele, Devon, EX5 4PW

sales@londonfine.co.uk
 E. & O. E.