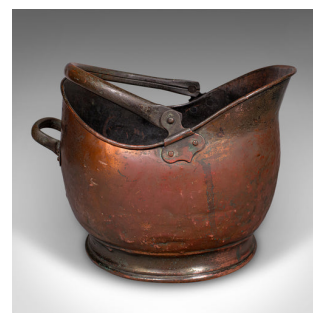


Vintage Helmet Coal Scuttle, English Copper, Fireside Basket, Victorian Revival

**DESCRIPTION**

Our Stock # 25542

This is a vintage coal scuttle. An English, copper helmet fuel basket in Victorian revival taste, dating to the mid 20th century, circa 1950. A classically styled piece, it brings a touch of Victorian fireside charm to any home.

- <li class="p1">Crafted in the traditional manner with rolled and riveted construction

- <li class="p1">Warm amber copper tones with a lightly time-worn patina

- <li class="p1">Articulated carry handle set within shaped hinge plates for ease of movement

- <li class="p1">Secondary rear handle, positioned opposite the flared spout for controlled pouring

- <li class="p1">Raised upon a tapering circular foot, providing balance and proportion

- <li class="p1">Maker's mark to the base for Nestor, dated 1956

A fine vintage coal basket, this helmet scuttle combines practical fireside utility with decorative Victorian revival style, making it a superb accent for both period and contemporary interiors. Delivered ready for the home.

Search [London Fine for #25542](#) , or scan the QR code for more photos and details

DIMENSIONS

Max Width: 28.5cm (11.25")

Max Depth: 37cm (14.5")

Max Height: 26cm (10.25")

Handle Raised: 36.5cm (14.25")

LIST PRICE

£385.00

