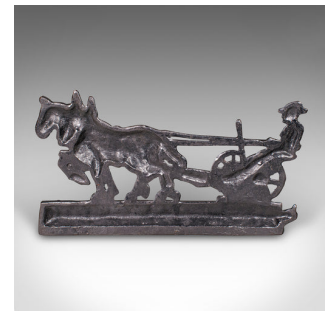
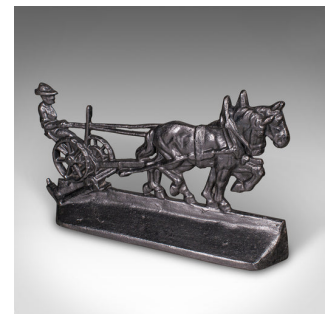


Antique Ploughman Doorstop, English, Cast Iron, Farmhouse Door Keeper, Victorian



DESCRIPTION

Our Stock # 25608

This is an antique Ploughman doorstop. An English, cast iron farmhouse decorative door keeper with Shire horse interest, dating to the early Victorian period, circa 1850. A charming and substantial piece, it captures a delightful rural scene with fine period detail.

- Depicts a ploughman and his shire horses, rendered in an appealing manner
- Substantial cast iron construction with a consistent graphite finish
- Superb detail, from the horse reigns to the spoked cart wheels
- Good weight in the hand at 4.01kg (8.84 lb) - ideal for securing medium to large doors
- Displays beautifully within farmhouse interiors or country themed rooms

A fine example of Victorian decorative ironwork, this antique Ploughman doorstop combines practical door-keeping functionality with idyllic rural charm, making it a superb addition to both collectors and period home settings. Delivered ready for the home.

Search [London Fine for #25608](#) , or scan the QR code for more photos and details

DIMENSIONS

Max Width: 35.5cm (14")
Max Depth: 5cm (2")
Max Height: 20cm (7.75")

LIST PRICE

£595.00

