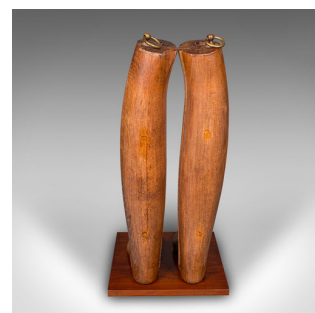


Antique Bootmaker's Display, English, Beech, Riding Boot Stretcher, Edwardian



**DESCRIPTION**

Our Stock # 18.9964

This is an antique bootmaker's display. An English, riding boot stretcher mounted on a mahogany plinth, dating to the Edwardian period, circa 1910. A fascinating example of early 20th century retail craftsmanship, offering both practical charm and decorative appeal.

- Charming display piece, ideal for a shop window or as country house dressing room décor
- Anatomical boot form crafted from select beech, showing fine grain interest and warm caramel hues
- Mounted upon a mahogany plinth with a rich russet finish, providing an attractive contrast in tone
- Original hardware and lettering remain present to the upper section, adding authenticity and period character
- Dressed to the base with a protective suede leather covering
- Displays superb craftsmanship typical of early 20th century English bootmakers
  - Perfect as a conversation piece, or for those with an interest in equestrian, shoemaking or retail heritage

**DIMENSIONS**

Max Width: 26cm (10.25")  
 Max Depth: 31cm (12.25")  
 Max Height: 54cm (21.25")

**LIST PRICE**

£895.00

