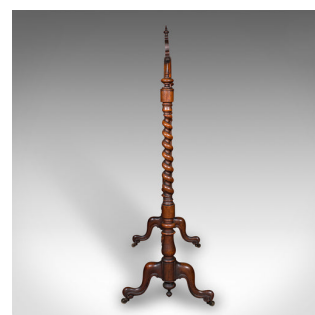


Antique Embroidered Fire Screen, English, Walnut, Needlepoint, Early Victorian



DESCRIPTION

Our Stock # 25593

This is an antique embroidered fire screen. An English, walnut and glazed needlepoint reflector panel, dating to the early Victorian period, circa 1840. A truly exceptional example of early Victorian craftsmanship, this screen combines exquisite needlepoint artistry with elegant woodworker's skill, creating a statement piece of beauty and warmth.

- Select walnut stocks displaying fine grain interest and rich caramel hues throughout
- Presented in good antique condition, ready for the finest of lounges
- Elegant fretwork pediments crown the frame, adorned with pierced detail and finial embellishments
- Barley twist supports add a delightful sense of movement and refinement

- Delightful needlepoint panel, depicting a hawk and wildflower scene in soft, natural tones
- Embroidery mounted behind clear, bright glazing, preserving the fine textile beneath
- Reverse panel dressed in saffron silk cotton, offering a charming period contrast with light ageing

DIMENSIONS

Max Width: 73.5cm (29")
 Max Depth: 44cm (17.25")
 Max Height: 136.5cm (53.75")
 Panel Width: 55.5cm (21.75")
 Panel Height: 70cm (27.5")

LIST PRICE

£1,795.00

