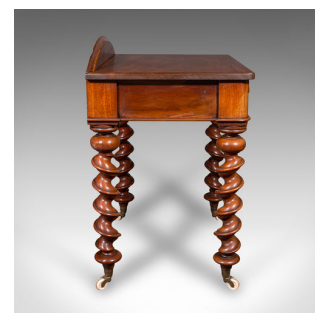


Antique Writing Desk, English Side Table, Correspondence, Study, Victorian, 1890



DESCRIPTION

Our Stock # 25601

This is an antique writing desk. An English, mahogany side table, dating to the late Victorian period, circa 1890. A delightful example, presenting fine English craftsmanship and enduring charm. This elegant piece exudes the refinement of the late 19th century, blending decorative appeal with practical design. A wonderful addition to any period interior or refined study.

- Constructed from select mahogany stocks with fine grain interest and warm caramel hues
- Graced with a distinctive demi-lune back rest, offering a graceful visual flourish
- Broad writing surface ideal for correspondence, study, or display
- Single wide drawer set within the apron, dressed with a pair of circular brass pulls
 - Drawer runs smoothly and provides ample storage for writing materials and stationery
- Maker's name engraved to the drawer edge – a mark of authenticity and heritage
- Dating to circa 1890, crafted by the respected cabinetmakers J. Waterer & Sons, Chertsey
- Supported by a striking arrangement of opposed barley twist legs, masterfully turned
- The whole riding upon a quartet of ceramic castors for effortless movement

DIMENSIONS

- Max Width: 69.5cm (27.25")
- Max Depth: 52cm (20.5")
- Max Height: 84.5cm (33.25")
- Surface Height: 75cm (29.5")
- Kneehole Width: 47cm (18.5")
- Kneehole Height: 60cm (23.5")
- Drawer Width: 45cm (17.75")
- Drawer Depth: 44cm (17.25")
- Drawer Height: 6.5cm (2.5")

LIST PRICE

£2,395.00

