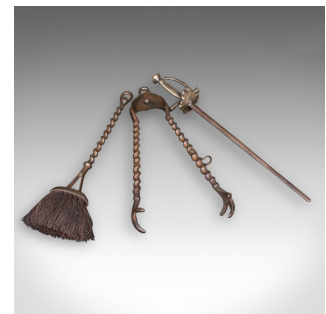
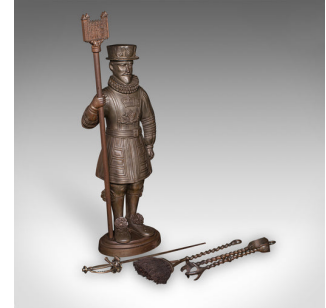


Antique Beefeater Fireside Companion, Cast Iron, English, Fire Tools, Edwardian



DESCRIPTION

Our Stock # 25723

This is an antique Beefeater fireside companion. An English, cast iron fireplace figure dating to the Edwardian period, circa 1910. Rich in character and superbly detailed, this piece brings both function and historic charm to the traditional hearth – a fine display of early 20th century craftsmanship.

- A wonderfully figural fireplace companion from Edwardian England
- Presents a Beefeater in full ceremonial dress, confidently posed with raised staff
 - Crafted in quality cast iron with excellent figural definition and crisp detailing throughout
 - Displays a lightly aged patina, offering warm depth and period authenticity
- Stands with good balance and pleasing heft, weighing approximately 10.075kg (22.2 lb)
 - The Beefeater's silvered brass staff cleverly conceals a fire poker, blending artistry and practicality
 - Poker sits upon a plinth styled as the Tower of London, beautifully echoing the figure's heritage
 - To the reverse, a pair of fire tongs and a hearth brush hang neatly within a fitted recess

DIMENSIONS

Max Width: 30cm (11.75")
 Max Depth: 20cm (7.75")
 Max Height: 85cm (33.5")
 Poker Length: 45cm (17.75")



+44 (0) 207 1833 511

Fine heraldic motif and textured costume elements superbly detailed in the casting

London Fine Ltd
 The Antique Village
 The Old Whiteways Cider Factory
 Hele, Devon, EX5 4PW

sales@londonfine.co.uk

E. & O. E.

Search London Fine for #25723 or scan the QR code for more photos and details