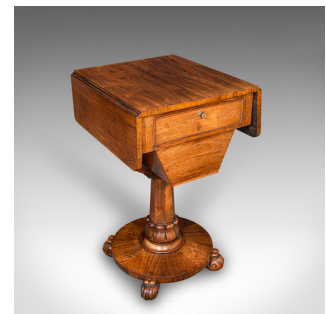


Antique Ladies Work Table, English, Drop-Leaf, Sewing, Games, William IV, C.1835



DESCRIPTION

Our Stock # 25594

This is a charming antique ladies work table. An English, rosewood sewing or occasional games table dating to the William IV period, circa 1835. Of elegant form and fine craftsmanship, this versatile piece combines beauty and function, ideal for the refined drawing room, sewing corner, or study.

- Presenting the graceful proportions and refinement typical of the William IV era
- A versatile sewing or games table, suited for decorative or practical use
- Handcrafted from select stocks, showcasing fine grain interest and warm caramel hues
- Presented with a lustrous wax-polished finish, enhancing the natural beauty of the timber

- Pair of hinged leaves extend to provide a generous working or display surface
- Leaves rest securely upon folding 'flying' arms, operating smoothly and reliably
- Single drawer to the fascia, dressed with an inset working lock – key present
- Below sits a deep trapezoidal wool box, perfect for storing sewing materials or small items

DIMENSIONS

Max Width: 43.5cm (17.25")
 Max Depth: 48cm (19")
 Max Height: 75.5cm (29.75")
 Extended Width: 75cm (29.5")

LIST PRICE

£2,450.00



• Offers excellent hidden storage capacity without compromising elegant proportions

+44 (0) 207 1833 511
 Search [London Fine](#) for #25594 , or scan the QR code for more photos and details

London Fine Ltd
 The Antique Village
 The Old Whiteways Cider Factory
 Hele, Devon, EX5 4PW

sales@londonfine.co.uk
 E. & O. E.