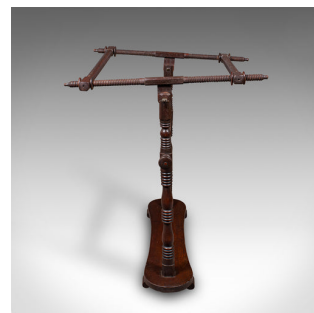


Antique Adjustable Tapestry Frame, English Needlepoint Stretcher, Late Victorian



DESCRIPTION

Our Stock # 25629

This is an antique adjustable tapestry frame. An English, mahogany country house needlepoint stretcher, dating to the late Victorian period, circa 1880.

- Appealing tapestry frame offering a useful range of adjustment
- Displays a desirable aged patina and in good original order
- Select stocks present fine grain interest and deep russet hues
- Dual orientation - can be used upright or through 90 degrees to horizontal
- Twist operation throughout, for a tactile traditional experience
- Rotary rack to the upper and lower rails adjusting through a maximum of 62cm (24.5")
- Upper and lower frame presents a useful rail width of 51cm (20")
- The whole stands upon a shaped plinth base with distinctive gadrooned toes

This is a fine antique adjustable tapestry frame, graced with country house appeal and a range of adjustment suitable for variable sizes of needlepoint crafting. Solid joints and construction, delivered ready for the home.

DIMENSIONS

Standard Width: 76cm (30")
 Standard Depth: 17cm (6.75")
 Standard Height: 102cm (40.25")
 Extended Width: 76cm (30")
 Extended Depth: 67cm (26.5")
 Extended Height: 75.5cm (29.75")

LIST PRICE

£895.00



Search [London Fine](#) for #25629, or scan the QR code for more photos and details

+44 (0) 207 1833 511

London Fine Ltd
 The Antique Village
 The Old Whiteways Cider Factory
 Hele, Devon, EX5 4PW

sales@londonfine.co.uk
 E. & O. E.