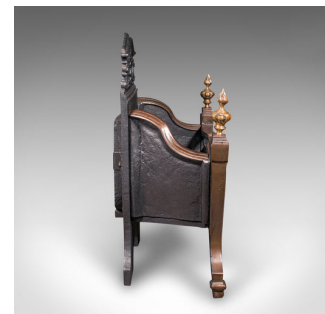


Antique Fire Basket, English, Cast Iron, Hearth, Georgian Revival, Victorian



DESCRIPTION

Our Stock # 25517

This is a delightful antique fire basket. An English, cast iron, steel and brass self-contained hearth in Georgian revival taste, dating to the late Victorian period, circa 1900. A fine example of period craftsmanship, it presents a balanced form, elegant detailing, and appealing material contrast, ideal for the traditional fireside.

A charming piece in useful proportion, the fire basket displays a deep cast iron body, enriched with steel and brass embellishments

The small pediment is adorned with a relief cast frieze, featuring foliate and scroll motif

Presented in the Georgian manner, lending subtle decorative interest to the design.

A pair of brass finials stand proudly above the grate, offering a warm golden hue

The steel bars to the fascia display a pleasing natural patina, the product of careful age and gentle use

Accentuated with a brass apron across the lower edge, offering a final flourish of period refinement

Standing confidently upon a pair of splayed feet, completing the elegant form and ensuring excellent stability

<li cla ...

DIMENSIONS

- Max Width: 50.5cm (20")
- Max Depth: 22.5cm (8.75")
- Max Height: 57cm (22.5")
- Grate Width: 36cm (14.25")
- Grate Depth: 18cm (7")

LIST PRICE

£895.00

