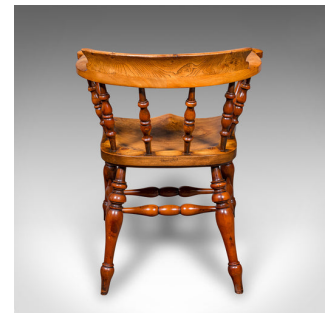
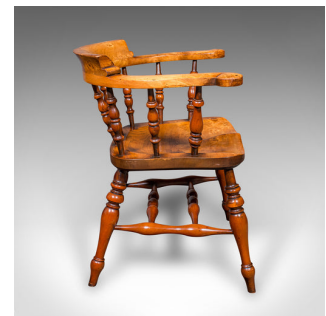




Vintage Smoker's Bow Chair, English Ash, Captain's Elbow Seat, Victorian Revival



DESCRIPTION

Our Stock # 25702

This is a fine vintage smoker's bow chair. An English, ash captain's elbow seat, dating to the late 20th century, circa 1980. A high-quality Victorian revival piece by renowned craftsman Stewart Linford, it presents superb traditional form, excellent comfort, and rich natural colour.

- Created in the Victorian revival style with the care and attention once typical of the English school
- Constructed from select ash stocks, displaying fine grain detail and rich biscuit hues
- Features a broad, bowed crest rail that flows elegantly into the horseshoe armrest
- Eight oblique turned spindles provide sturdy support to the back and arms
- Shaped saddle seat with a pronounced crown, offering comfortable seating at 44cm (17.25") height
- Raised upon turned and splayed legs, united by a double H-stretcher for strength and balance
- Maker's signature engraved to the rear for Stewart Linford, a quality late 20th century craftsman
- Exhibits traditional joinery and fine finishing, true to 19th century design influence
- A perfect example of British furniture revival, ideal for study, office, or country

DIMENSIONS

- Max Width: 66cm (26")
- Max Depth: 53.5cm (21")
- Max Height: 74.5cm (29.25")
- Seat Width: 40cm (15.75")
- Seat Depth: 40cm (15.75")
- Seat Height: 44cm (17.25")

LIST PRICE

£1,195.00



0207 1833 511

Search [London Fine](#) for #25702, or scan the QR code for more photos and details
The Antique Village
The Old Whiteways Cider Factory
Hele, Devon, EX5 4PW

sales@londonfine.co.uk

E. & O. E.