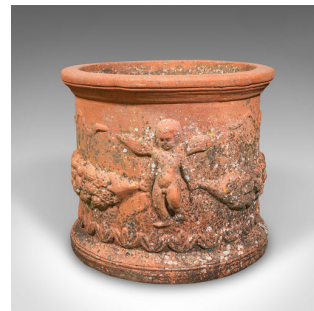


Antique Patio Jardinière, English, Terracotta, Veranda Planter Pot, Edwardian



DESCRIPTION

Our Stock # 25489

This is an antique patio jardinière. An English, terracotta planter in classical Cherubic taste, dating to the Edwardian period, circa 1910. Offering wonderful decorative appeal and fine weathered character, this charming piece would make a superb addition to any veranda, conservatory, or garden terrace.

- Delightful Edwardian jardinière with timeless classical styling
- A charming planter for displaying flora such as lavender, small conifers or mixed herbs
- Crafted in quality terracotta, presenting warm amber hues and natural weathering
- In original antique order, displaying gentle age-related patina commensurate with outdoor use

- Relief decorated fascia, featuring playful cherubs among garlands and foliate scrolls
- Further embellished with a snake motif, adding visual interest and symbolism
- Circular form with rolled rim and pleasingly tactile surface texture

This is a beautiful antique patio jardinière, with charming classical detail and Edwardian garden appeal. Ideal for displaying seasonal blooms or as a standalone decorative feature. Delivered ready for display.

+44 (0) 207 1833 511

Search [London Fine](#) for #25489 , or scan the QR code for more photos and details

DIMENSIONS

Max Width: 47cm (18.5")

Max Depth: 47cm (18.5")

Max Height: 40cm (15.75")

LIST PRICE

£675.00

