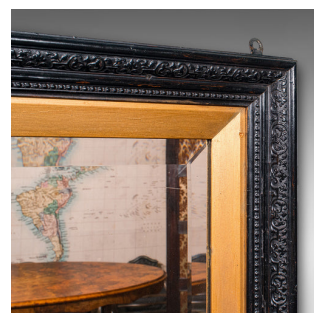
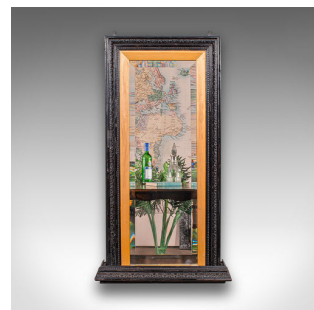


## Tall Antique Hall Mirror, English, Reception, Valet, Aesthetic Period, Victorian



### DESCRIPTION

Our Stock # 25551

This is a tall antique hall mirror. An English, ebonised mahogany reception hall valet mirror in Aesthetic Period taste, dating to the Victorian period, circa 1880. A charming and practical example, perfect for the refined entrance hall.

- Displays a striking ebonised finish with contrasting gilt border, creating an elegant visual balance
- Crafted in select mahogany, offering fine grain beneath the deep black ebonised finish
- Frame enriched with a relief foliate pattern set within rolled borders, exuding Aesthetic Period character
- Features a quality bevelled mirror plate, lightly foxed with age for authentic antique charm

- Lower valet stand section provides a useful ledge for keys, gloves, or pocket contents
- Dressed with a pair of brass mounting loops, facilitating simple wall placement
- Presents well throughout, displaying light wear commensurate with age and use

### DIMENSIONS

Max Width: 50.5cm (20")  
 Max Depth: 13.5cm (5.25")  
 Max Height: 92cm (36.25")  
 Mirror Plate Width: 25.5cm (10")  
 Mirror Plate Height: 79.5cm (31.25")

### LIST PRICE

£895.00



This is a delightful antique hall mirror, offering period elegance and functional appeal. Ideal for a Victorian entranceway or refined dressing area. Delivered ready to display.

044 (0) 207 1835 511

Search [London Fine for #25551](#), or scan the QR code for more photos and details  
 London Fine Ltd  
 The Antique Village  
 The Old Whiteways Cider Factory  
 Hele, Devon, EX5 4PW

[sales@londonfine.co.uk](mailto:sales@londonfine.co.uk)

E. & O. E.