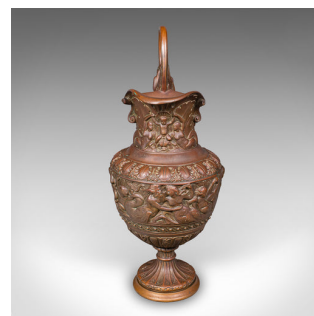


Pair of Antique Display Urns, Italian, Bronze, Ewer, Grand Tour Decor, Victorian



DESCRIPTION

Our Stock # 25695

This is a pair of antique display urns. An Italian, bronze decorative ewer in Grand Tour taste, dating to the Victorian period, circa 1860. A captivating duo offering the romance and artistry of the golden age of continental travel.

- Substantial bronze form with lightly patinated amber-toned hues
- Richly adorned with profuse relief cast figural decoration, showcasing fine Italian craftsmanship
- Striking serpentine handles, each embellished with a mourning female figure in sculptural form
- Flared rims host a small internal platform – ideal for tea lights or candles
- Raised upon circular footers with ribbed sash detailing for added elegance
- Dressed with protective leather covering to the base
- Good weight in the hand at 5.685kg (12.53 lb)
- Beautiful as mantel garniture, console decoration, or tabletop centrepieces

A refined pair of Victorian Italian Grand Tour ewers, offering exceptional ornamental presence for the distinguished interior. Delivered ready to display

DIMENSIONS

Max Width: 16.5cm (6.5")
 Max Depth: 25cm (9.75")
 Max Height: 40cm (15.75")

LIST PRICE

£1,985.00



Search London Fine for #25695, or scan the QR code for more photos and details.
 +44 (0) 207 1855 511

London Fine Ltd
 The Antique Village
 The Old Whiteways Cider Factory
 Hele, Devon, EX5 4PW

sales@londonfine.co.uk
 E. & O. E.