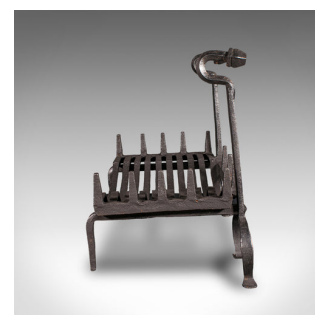


Antique Fireplace Set, English, Wrought Iron, Fire Basket, Andirons, Victorian



DESCRIPTION

Our Stock # 25731

This is an antique fireplace set. An English, wrought iron fire basket and andirons ensemble, dating to the late Victorian period, circa 1900. An attractive and substantial fireside arrangement with appealing tonality and traditional craftsmanship.

- Charming late Victorian fireplace set with excellent proportion and presence
- Substantial wrought iron displays a gentle, time-worn patina
 - Generously sized fire basket with traditional barbed tooth stays to retain the contents
- Pair of elegant andirons exhibiting a wonderfully serpentine swan-neck form
- Andirons raised upon arched legs with extended rear supports for stability
- Suitable for all fuel types, including coal, kindling and logs
- Ideal for enhancing a period fireplace or country house hearth

This is a delightful and practical Victorian fireplace set, ready to grace any traditional interior. Delivered ready for the home.

Search [London Fine for #25731](#) , or scan the QR code for more photos and details

DIMENSIONS

- Max Width: 78.5cm (31")
- Max Depth: 40cm (15.75")
- Max Height: 53cm (20.75")
- Basket Interior Width: 58cm (22.75")
- Basket Interior Depth: 34cm (13.5")
- Fire Dog Width: 22.5cm (8.75")
- Fire Dog Depth: 40cm (15.75")
- Fire Dog Height: 53cm (20.75")

LIST PRICE

£795.00

