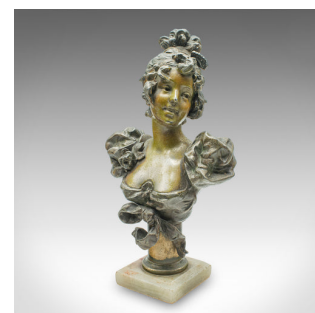


Pair of Antique Figural Bookends, French Spelter Busts, Art Nouveau, Victorian



**DESCRIPTION**

Our Stock # 25753

This is a pair of antique figural bookends. A French, spelter bronze female bust in Art Nouveau taste, dating to the late Victorian period, circa 1900. Wonderfully expressive pieces with superb tonality and enduring fin de siècle charm.

- Attractive Art Nouveau female figures with excellent character and presence
- Quality spelter bronze displaying a delightful patination of golden-green hues
- Classic bust form, each figure presented in a distinctive pose
- Ideal for use as expressive bookends or as decorative ornaments for a side table or mantle

- Pleasing weight in the hand at 1.894kg and 1.878kg respectively (4.17 lb)
- Wonderfully bohemian aesthetic capturing the spirit of the late 19th century
- Mounted upon appealing onyx marble socles, each dressed with protective base cushions

This is a captivating pair of Art Nouveau female busts—rich in style, colour and decorative interest. Perfect for bringing classical elegance to any interior. Delivered ready to display

**DIMENSIONS**

Max Width: 16cm (6.25")  
 Max Depth: 9.5cm (3.75")  
 Max Height: 27.5cm (10.75")

