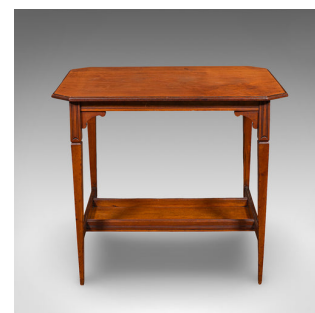
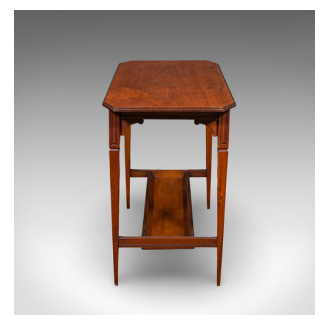


Antique Occasional Table, English, Walnut, Side, Hall, Under Tier, Edwardian



DESCRIPTION

Our Stock # 25719

This is an antique occasional table. An English, walnut side table with under tier, dating to the Edwardian period, circa 1910. A charming and practical piece with attractive detail and warm tones.

- Appealing Edwardian side table with useful lower storage
- Select walnut stocks present fine grain interest and warm caramel hues
- In good order throughout, displaying a desirable aged patina
- Distinctive octagonal top with canted corners for visual interest
- Neat corner detailing with scrolled brackets and pinstripe carving to the apron
 - Stands upon gently tapering legs, accentuated at the shoulder with chiseled detailing
- Legs united by a practical under tier, ideal for additional storage or display
- A versatile piece suited to lounge, hallway or bedroom settings

A delightful Edwardian walnut occasional table, offering both decorative charm and everyday practicality. Solid joints and construction, delivered ready for the home.

DIMENSIONS

- Max Width: 73cm (28.75")
- Max Depth: 41.5cm (16.25")
- Max Height: 66cm (26")
- Under Tier Width: 56.5cm (22.25")
- Under Tier Depth: 14.5cm (5.75")
- Under Tier Height: 49cm (19.25")



Search [London Fine for #25719](#) , or scan the QR code for more photos and details

+44 (0) 207 1833 511

London Fine Ltd
The Antique Village
The Old Whiteways Cider Factory
Hele, Devon, EX5 4PW

sales@londonfine.co.uk
E. & O. E.