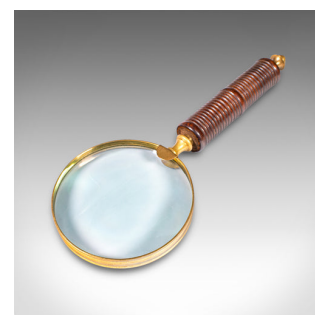
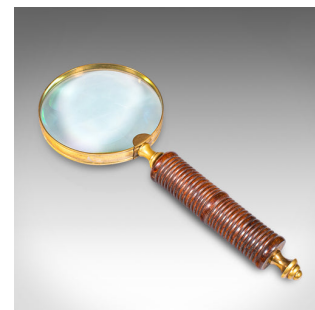


## Antique Ladies Sampler Magnifier, English, Brass, Magnifying Glass, Edwardian



### DESCRIPTION

Our Stock # 25666

This is an antique ladies sampler magnifier. An English, walnut and brass magnifying glass, dating to the Edwardian period, circa 1910. A quality example with bright magnification and charming period appeal.

- Appealing Edwardian magnifier of fine craftsmanship
- Quality brass frame presents warm golden hues with gentle ageing
- Tactile turned walnut handle displays a deep chestnut hue and fine grain interest
- The thick, 9.5cm diameter objective lens offers excellent clarity
- Magnifies with aplomb at distances up to 18cm (7")
- Ideal for embroidery, needlework, reading small text or as a desk accessory
- Equally suited to use by a cartographer for analysing maps
- A delightful piece for collectors of Edwardian optical instruments

A refined and decorative antique brass and walnut magnifying glass, offering superb usability and timeless style. Delivered ready for the home.

Search [London Fine for #25666](#) , or scan the QR code for more photos and details

### DIMENSIONS

Max Width: 10cm (4")  
Max Depth: 2.5cm (1")  
Max Height: 25cm (9.75")  
Objective Diameter: 9.5cm (3.75")

