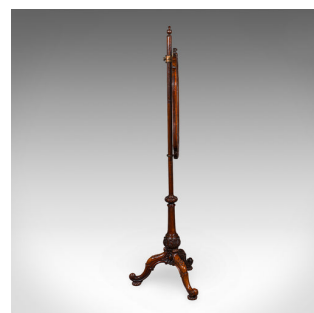


Antique Pole Screen, English, Embroidered Fire Panel, Reflector, Early Victorian



DESCRIPTION

Our Stock # 25745

This is an antique pole screen. An English, rosewood and glass embroidered fireside heat reflector, dating to the early Victorian period, circa 1840. A beautiful example showcasing fine craftsmanship, rich materiality and exceptional decorative interest.

- Select stocks present fine grain interest and deep caramel hues
- Glass panel offers a clear, bright view of the embroidery within
- Needlepoint scene depicts birds of paradise, rich in colour and exquisite detail
- Screen height adjustable through 52cm, ideal for managing heat or display
- Brass vernier tightens securely upon the support to hold the panel in place
- Striking turned upstand, adorned with carved leaf detail
- Standing upon a trio of delightful cabriole legs, each with foliate-carved knee
- Distinctive gadrooned pad feet enhance the elegant silhouette

A superb early Victorian pole screen, highly decorative and eminently displayable. Its vibrant needlework, quality frame and graceful stance make it a refined addition to any fireside setting. Solid joints and construction, delivered ready for the home.

DIMENSIONS

Max Width: 58.5cm (23")
 Max Depth: 42cm (16.5")
 Max Height: 155cm (61")
 Panel Width: 53.5cm (21")
 Panel Depth: 52cm (20.5")

LIST PRICE

£1,495.00



Search [London Fine for #25745](#), or scan the QR code for more photos and details

+44 (0) 207 1833 511

London Fine Ltd
 The Antique Village
 The Old Whiteways Cider Factory
 Hele, Devon, EX5 4PW

sales@londonfine.co.uk
 E. & O. E.