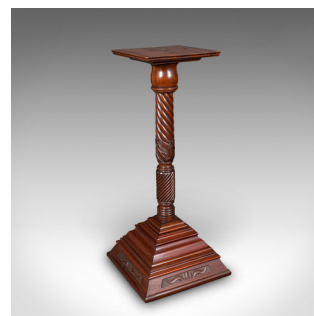


Pair of Large Antique Torchiere, English, Country House, Bust Stands, Victorian



DESCRIPTION

Our Stock # 25802

This is a pair of large antique torchiere. An English, mahogany country house bust stand or jardiniere pedestal, dating to the late Victorian period, circa 1900. Excellent display furniture with impressive stature and the refined presence suited to a hotel, gallery or grand entrance hall.

- Elegant late Victorian torchiere, with exceptional proportion and visual impact
- Select stocks present fine grain interest and deep russet hues
- Prominent display plinths, ideal for busts, favoured ornaments or planters
- Striking twist gadrooned supports showcase superb craftsmanship
- Fascinating tiered bases offer stability and decorative appeal
- Of the quality and appearance to grace a country house, hotel foyer or reception suite

A distinguished pair of Victorian display pedestals, offering commanding presence and classical lines. A fine choice for any refined interior or professional display environment. Solid joints and construction, delivered ready for the home.

Search [London Fine for #25802](#) , or scan the QR code for more photos and details

DIMENSIONS

Max Width: 50cm (19.75")
 Max Depth: 50.5cm (20")
 Max Height: 116.5cm (45.75")
 Plinth Width: 38cm (15")
 Plinth Depth: 38.5cm (15.25")

LIST PRICE

£2,450.00

