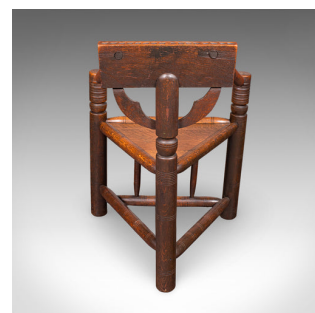




Antique Turner's Chair, English Oak, Warwick, Old Saxon, Elbow Seat, Victorian



DESCRIPTION

Our Stock # 25835

This is an antique turner's chair. An English, oak John Starkey 'Warwick' style elbow seat, dating to the late Victorian period, circa 1900. A charming and distinctive example inspired by the celebrated 'Old Saxon' form, offering great presence and excellent craftsmanship.

- Select oak stocks present fine grain interest and warm caramel hues
- Pleasingly distinctive in the John Starkey Warwick style, echoing early vernacular forms
- Displays a desirable aged patina and remains in good order throughout
- Superb triangular motif to the composition, crafted from impressively thick stocks
- Striking geometric and foliate engravings enhance the back rest
- Bobbin turned arms meeting substantial supports measuring approximately 2.75" in diameter
- Standing upon turned legs, united with shaped stretchers for added strength
- A trio of front rails adds stability and visual interest to the base

DIMENSIONS

Max Width: 65cm (25.5")
Max Depth: 56.5cm (22.25")
Max Height: 89.5cm (35.25")
Seat Width: 50cm (19.75")
Seat Depth: 46.5cm (18.25")
Seat Height: 45.5cm (18")

LIST PRICE

£1,495.00



A captivating turner's chair with excellent period charm, being ideal for collectors of revival furniture or as a characterful accent piece in a refined interior. Solid joints and a comfortable seat make this a perfect choice for the home.

Search [London Fine for #25835](#), or scan the QR code for more photos and details

London Fine Ltd
The Antique Village
The Old Whiteways Cider Factory
Hele, Devon, EX5 4PW

sales@londonfine.co.uk
E. & O. E.