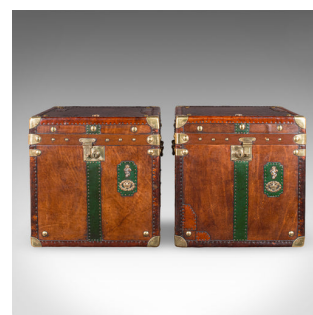


## Late Vintage Pair of Luggage Cases, English, Leather Trunk, Campaign, Nightstand



### DESCRIPTION

Our Stock # 25866

This is a late vintage pair of luggage cases. An English, leather and brass bedside nightstand, or occasional tables with storage, offering 21st century campaign revival styling.

- Eye-catching casework, with fascinating detail and refined finishes
- Each displaying a desirable patina and in good order throughout
- Quality leather tanned to a deep caramel hue with a lightly aged finish
- Bound to each corner with brass cappings over pinned leather straps
- Each dressed with a brass slide clasp, with inset lock— keys absent
- Once open, the lids remain raised upon taut fabric straps
- Deep charcoal-coloured textile linings in a pleasingly clean order
- The tactile lining accentuated with a brass press stud finish
- Fascia tastefully adorned with forest green leather straps

Search [London Fine for #25866](#) , or scan the QR code for more photos and details

### DIMENSIONS

Max Width: 50cm (19.75")  
 Max Depth: 36.5cm (14.25")  
 Max Height: 50cm (19.75")  
 Internal Width: 44.5cm (17.5")  
 Internal Depth: 31.5cm (12.5")  
 Internal Height: 45cm (17.75")

