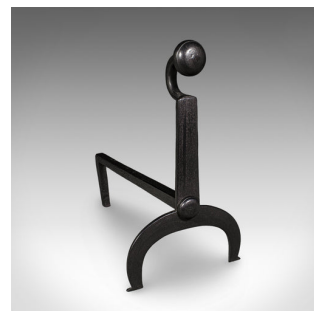
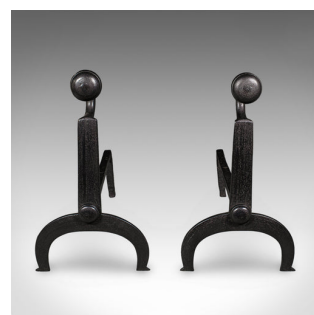


Pair of Antique Fire Dogs, English, Wrought Iron, Fireside Andiron, Victorian



DESCRIPTION

Our Stock # 25930

This is a pair of antique fire dogs. An English, wrought iron fireside andiron, dating to the Victorian period, circa 1850.

- Characterful, appealing andirons - ideal for the traditional hearth
- Displaying a desirable aged patina and in good original order
- Wrought iron resplendent in a good, consistent graphite finish
- Appealing roundels sit atop a dashing swan neck
- Standing on a pair of distinctive arch legs to the front
- Generous rear support for placing a medium depth fire grate

This is a fantastic pair of antique firedogs, from the early Victorian period. Delivered ready for the home.

Search [London Fine for #25930](#) , or scan the QR code for more photos and details

DIMENSIONS

Max Width: 21cm (8.25")

Max Depth: 41cm (16.25")

Max Height: 37cm (14.5")

LIST PRICE

£325.00

