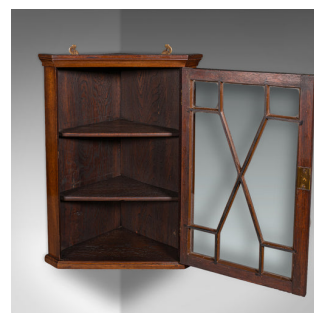
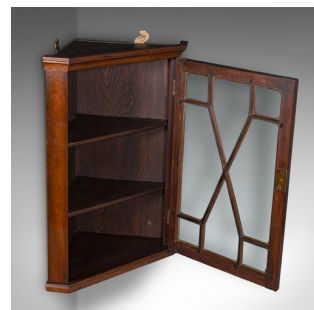


Small Antique Corner Cabinet, English, Glazed Display Cupboard, Edwardian, 1910



DESCRIPTION

Our Stock # 25923

This is a small antique corner cabinet. An English, glazed mahogany display cupboard, dating to the Edwardian period, circa 1910.

- Delightful display furniture with a pleasingly classic appearance
- Presents a desirable aged patina and in good order
- Select stocks present fine grain interest and warm caramel hues
- Quality glazing offers a clear, bright view of the interior
- Arranged as a trio of shelves behind a glazed door in the astragal manner
- Door replete with an inset, brass-lined lock — in working order, key present
- Dressed with a pair of shaped brass mounts, for ease of hanging
- Corner footprint occupies a width from wall to wall of 31.5cm (12.5") with a depth of 26cm (10.25")

This is a wonderful small antique corner cabinet, with appealing colour and a nicely glazed door. Solid joints and construction, delivered ready for the home.

Search [London Fine for #25923](#) , or scan the QR code for more photos and details

DIMENSIONS

Max Width: 44.5cm (17.5")
 Max Depth: 25.5cm (10")
 Max Height: 62cm (24.5")
 Shelf Depth: 19cm (7.5")
 Shelf 1 Height: 19cm (7.5")
 Shelf 2 Height: 17cm (6.75")
 Shelf 3 Height: 16cm (10.25")

LIST PRICE

£975.00

