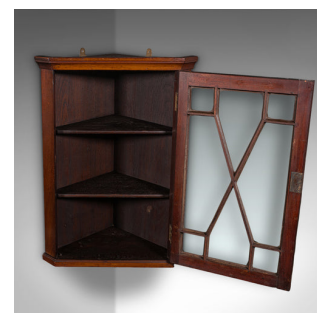
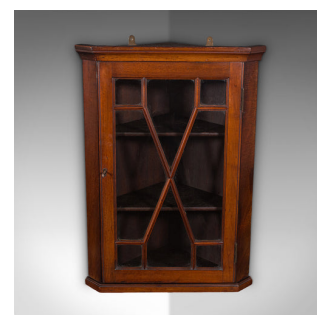
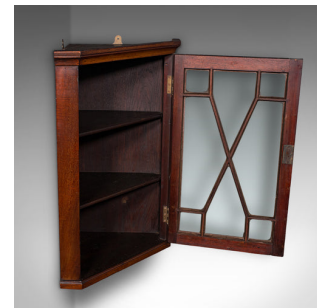


Small Antique Glazed Corner Cupboard, English, Wall Display Cabinet, Edwardian



DESCRIPTION

Our Stock # 25925

This is a small antique glazed corner cupboard. An English, mahogany wall display cabinet, dating to the Edwardian period, circa 1910.

- Charming wall display piece, with fine colour and figuring
- Displays a desirable aged patina and in good order throughout
- Select stocks show fine grain interest and a rich caramel hue
- Quality glazed door offers a clear, bright view of the interior
- Astragal manner to the glazed door, ahead of a trio of shelves
- Door dressed with a brass-lined lock – in working order, key present
- Fitted with a pair of brass hanging loops, for ease of wall mounting
- Corner footprint occupying a width from wall to wall of 31.5cm (12.5") with a depth of 26.5cm (10.5")

This is a delightful small antique glazed corner cupboard, setting a trio of shelves behind an eye-catching glazed door. Solid joints and construction, delivered ready for the home.

Search [London Fine for #25925](#) , or scan the QR code for more photos and details

DIMENSIONS

- Max Width: 44cm (17.25")
- Max Depth: 26cm (10.25")
- Max Height: 62cm (24.5")
- Shelf Width: 19.5cm (7.75")
- Shelf 1 Height: 17cm (6.75")
- Shelf 2 Height: 17.5cm (7")
- Shelf 3 Height: 18cm (7")

LIST PRICE

£945.00

