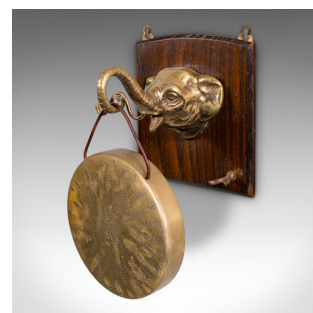
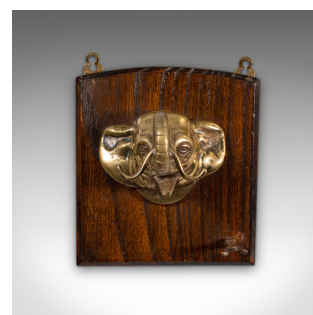
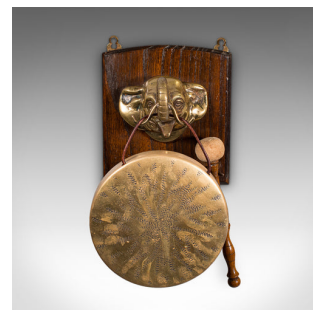


Antique Elephant's Head Gong, English, Brass, Mounted Dinner Chime, Victorian



DESCRIPTION

Our Stock # 25921

This is an antique elephant's head gong. An English, brass and mahogany mounted dinner chime, dating to the late Victorian period, circa 1900.

- Fine character and form distinguishes this charming wall gong
- Displays a desirable aged patina, gently time worn commensurate with use
- Quality brass presents bright golden tonality to the elephant and cymbal
- The mounting plinth presents fine grain interest and deep caramel hues
- Dressed with a pair of brass hanging loops, for ease of wall mounting
- Of superb character, the elephant head sits prominently, his trunk curling outwards
- With a pair of shaped rests, the cymbal hangs at the end of the trunk
- The cymbal makes a medium alarm when struck, ideal for within the home
- Supplied striker with cork head, resting upon the plinth with a brass mount

Search [London Fine for #25921](#) , or scan the QR code for more photos and details

DIMENSIONS

Max Width: 16cm (6.25")
 Max Depth: 14cm (5.5")
 Max Height: 27cm (10.75")
 Cymbal Diameter: 15cm (6")
 Mounting Plinth Width: 16cm (6.25")
 Mounting Plinth Height: 19cm (7.5")

LIST PRICE

£495.00

