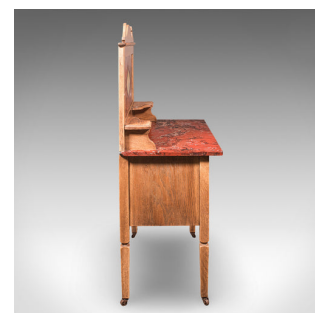


Antique Washstand, English, Pine, Dressing Table, Country House, Edwardian, 1910



**DESCRIPTION**

Our Stock # 25877

This is an antique washstand. An English, pine and faux marble gallery back dressing table, dating to the Edwardian period, circa 1910. A charming and practical stand, offering excellent colour, craftsmanship and traditional bedroom or dressing room appeal.

- Ideal for a bedroom, dressing room or country house interior
- Crafted from quality pine stocks with fine figuring
- Warm biscuit hues dance across the quality craftsmanship
- Superb faux marble effect applied to cool, tactile slate
- Marble finish skilfully presents red and white tones with black veining
- Elegant swan neck pediment rising above the gallery top
- Generous plinth surface, with a height of 73.5cm (29") for comfortable use
- Durable and practical surface for daily dressing or display
- Gallery back hosts a pair of candle brackets beneath the upper frieze

Search [London Fine for #25877](#) , or scan the QR code for more photos and details

**DIMENSIONS**

- Max Width: 83.5cm (32.75")
- Max Depth: 45.5cm (18")
- Max Height: 132cm (52")
- Plinth Height: 73.5cm (29")
- Cabinet Interior Width: 71cm (28")
- Cabinet Interior Depth: 36cm (14.25")
- Cabinet Interior Height: 26.5cm (10.5")

**LIST PRICE**

£975.00

