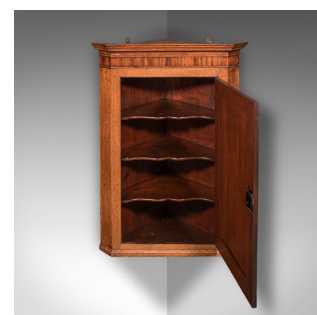
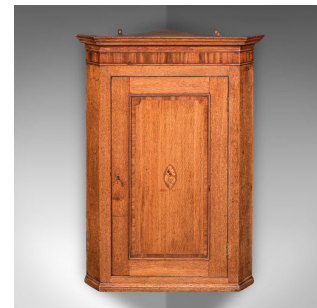


Antique Mounted Corner Cabinet, English, Oak, Wall Cupboard, Georgian, C.1780



DESCRIPTION

Our Stock # 25961

This is an antique mounted corner cabinet. An English, golden oak and mahogany wall cupboard with inlaid shell motif, dating to the Georgian period, circa 1780. A superbly proportioned example, displaying refined craftsmanship and elegant inlaid detail.

- Skilfully crafted from quality golden oak stocks
- Displays a desirable aged patina and in good order
- Fine figuring with light caramel hues and wisps of medullary rays
- Superb proportion with quality Georgian period craftsmanship
- Crown moulding accentuated with ebonised dog tooth inlay detail
- Field panel door adorned with a boxwood inlaid shell cartouche
- Door edge enhanced with mahogany cross-banding
- The door secured with an inset brass-lined lock – in working order, key present
- Opens wide to a fitted interior with fan-shaped shelves

Search [London Fine for #25961](#) , or scan the QR code for more photos and details

DIMENSIONS

- Max Width: 74cm (29.25")
- Max Depth: 43.5cm (17.25")
- Max Height: 102.5cm (40.25")
- Shelf Depth: 29.5cm (11.5")
- Shelf 1 Height: 19.5cm (7.75")
- Shelf 2 & 3 Height: 18.5cm (7.25")
- Shelf 4 Height: 23.5cm (9.25")

LIST PRICE

£1,495.00

