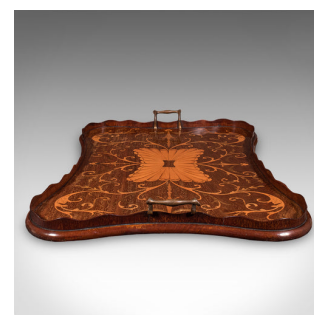


Antique Butler's Serving Tray, English, Afternoon Tea Platter, Inlay, Victorian



DESCRIPTION

Our Stock # 25657

This is an antique butler's serving tray. An English, mahogany afternoon tea platter with ornate boxwood inlay, dating to the late Victorian period, circa 1890. A striking and well proportioned tray, perfect for refined afternoon tea or evening cocktail service.

- Presented in a desirable butterfly form with pinched centres for ease of carrying
- Select stocks show fine grain interest and warm caramel hues
 - Boxwood scroll inlay with distinctive flowerhead centrepiece offers decorative contrast and sophistication
- Pair of brass carry handles with lightly patinated golden tones
- Smooth, tactile surface with pleasing proportions ideal for service or display
- Dressed to the base with a protective baize in a fetching emerald green
- Perfect for afternoon tea gatherings, cocktail presentation, or sideboard display

A handsome and well-crafted antique serving tray, this Victorian butler's platter combines refined design with period charm, making it a distinguished addition to any drawing room, dining space, or collector's setting. Delivered ready for the home.

DIMENSIONS

Max Width: 68cm (26.75")
 Max Depth: 45cm (17.75")
 Max Height: 5.5cm (2.25")

LIST PRICE

£895.00



Search [London Fine for #25657](#) , or scan the QR code for more photos and details

+44 (0) 207 1833 511

London Fine Ltd
 The Antique Village
 The Old Whiteways Cider Factory
 Hele, Devon, EX5 4PW

sales@londonfine.co.uk
 E. & O. E.