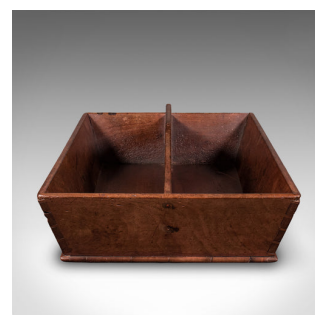


Antique Butler's Carry, English, Walnut, Country House, Work Box, Tray, Georgian



DESCRIPTION

Our Stock # 25927

This is an antique butler's carry. An English, walnut country house silver polishing box or cutlery tray, dating to the Georgian period, circa 1800.

- Delightful estate made butler's carry with a country house appearance
- Displays a desirable aged patina and in good original order
- Walnut stocks present fine grain interest and warm caramel hues
- Butler's grasp handle set neatly within the division
- Exquisite hand-cut dovetail corner joints show the level of care taken
- Dressed to the base with a protective suede leather cushion pad

This is a charming antique butler's carry, with appealing figuring and estate made finish. As useful today as it was over 200 years ago. Delivered ready to serve.

Search [London Fine for #25927](#) , or scan the QR code for more photos and details

DIMENSIONS

- Max Width: 43cm (17")
- Max Depth: 29cm (11.5")
- Max Height: 13cm (5")
- Division Width: 12cm (4.75")

LIST PRICE

£795.00

