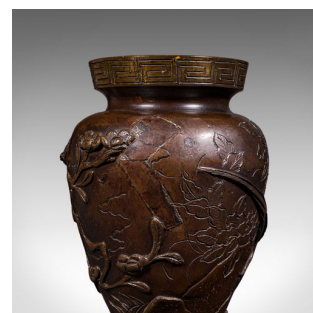
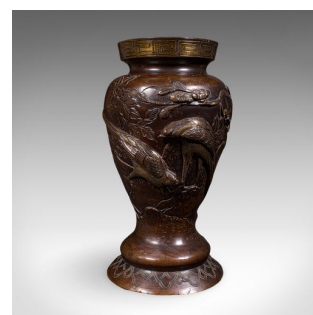


Pair of Antique Decorative Meiji Vases, Japanese, Bronze, Bouquet Pot, Victorian



DESCRIPTION

Our Stock # 25920

This is a pair of antique decorative Meiji vases. A Japanese, bronze baluster urn, dating to the mid Victorian period, circa 1870.

- Traditional baluster urn form with superb bird detail in the Meiji tradition
- Each displaying a desirable aged patina with a fascinating historic professional repair to one
- Quality bronze shows fine tonality with a warm chestnut coloration
- Ideal for small bouquets with an opening diameter of 6.5cm
- Skilfully crafted birds in high relief sit prominently around the form
- Shows each bird amongst tree branches with engraved leaf detail
- Rims adorned with a traditional Greek Key pattern
- Tapered circular footers provide a stable base for the vase

This is a wonderful pair of antique decorative vases, with classical Japanese detail from the early Meiji period. Wonderful patinated colour and visual interest. Delivered ready to display.

DIMENSIONS

- Max Width: 11.5cm (4.5")
- Max Depth: 11.5cm (4.5")
- Max Height: 21cm (8.25")
- Opening Diameter: 6.5cm (2.5")

LIST PRICE

£1,195.00



Search [London Fine for #25920](#) , or scan the QR code for more photos and details

+44 (0) 207 1833 511

London Fine Ltd
The Antique Village
The Old Whiteways Cider Factory
Hele, Devon, EX5 4PW

sales@londonfine.co.uk
E. & O. E.